



smart



Programming floor heating

This heating thermostat is pre-programmed with default settings for floor heating and towel rail.

Default Settings (Floor Heating)		Monday - Friday		Saturday - Sunday	
		Time	Temp	Time	Temp
Morning	<u>ON</u>	6.00am	26°C	6.00am	26°C
	<u>OFF</u>	8.00am	15°C	8.00am	15°C
Afternoon	<u>ON</u>	11:30am	26°C	11:30am	26°C
	<u>OFF</u>	12:30pm	15°C	12:30pm	15°C
Evening	<u>ON</u>	6.00pm	26°C	6.00pm	26°C
	<u>OFF</u>	10.00pm	15°C	10.00pm	15°C

Default Settings (Towel Rail)		Monday Friday	Saturday Sunday
		Time	Time
Morning	<u>ON</u>	6.00am	6.00am
	<u>OFF</u>	8.00am	8.00am
Afternoon	<u>ON</u>	11:30am	11:30am
	<u>OFF</u>	12:30pm	12:30pm
Evening	<u>ON</u>	6.00pm	6.00pm
	<u>OFF</u>	10.00pm	10.00pm

Wi-Fi heating thermostat



- ☁ large 4.3" LCD & CTP screen
- ☁ 7 day programmable
- ☁ air and floor sensor
- ☁ multiple sensor reading
- ☁ towel rail control

For detailed information, user manuals and how to setup and use App please visit www.casaheating.co.nz



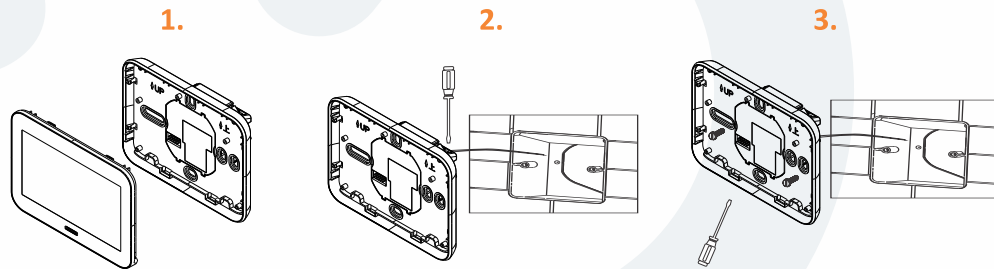
Casa Group Ltd, PO Box 35353, Browns Bay, Auckland
Free Call: 0800 00 22 72, info@casaheating.co.nz
www.casaheating.co.nz



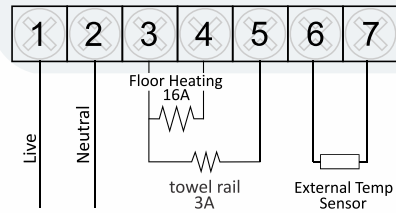
www.casaheating.co.nz

Fitting Instructions

1. Separate faceplate from the unit using screw driver
2. Follow the Wiring Diagram to connect the floor heating cold leads, optional t/rail power leads, exterior temperature sensor and electrical supply to the terminals
3. Re-attach the unit to the wall using machine screws and click back faceplate.

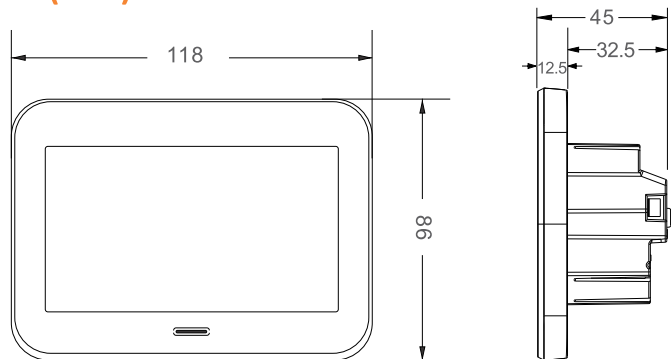


Wiring Diagram



NOTE: Thermostat connection must be done by registered electrician

Dimension(mm)

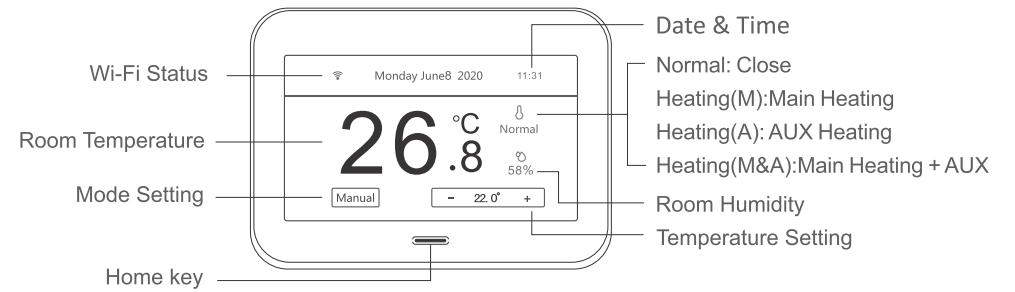


2

Specification

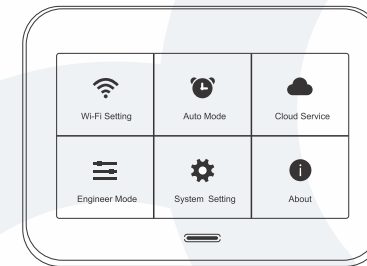
Touch Screen: 4.3", 480*272, RGB565, TFT with responsive Capacitive Touch Panel
Wi-Fi Spec: IEEE 802.11 b/g/n
Input Voltage: 240VAC~50/60Hz
Sensors: SHT20D (built-in) / NTC10K (floor sensor)
Power Consumption: 3W

Display Diagram



- Power ON/OFF:** Press Home key and hold for at least 3 seconds
- Menu Screen:** Press Home key to access main Menu screen
- Mode Selection:** Press the "Manual/Auto" button to change the operating mode
- Temperature Setting:** Press "+/-" button to increase or decrease temperature
- Wi-Fi Setting:** Press the "Wi-Fi status icon" on home screen to view or change settings
- Screen Switch:** Press Home key to switch between Home screen and Menu screen

Menu Screen



- WiFi Setting:** Setup Wi-Fi connection including SSID list and password entry
- Auto Mode:** A weekly circulation program schedule with 6 time periods each day
- Engineer Mode:** Setting the advanced preferences options (default password 123456)
- System Setting:** Screen light tuning, Time and Date settings, Touch settings, System Reset
- About:** System Firmware and Hardware Version

3